

	Source 4 25/50	6
	4 Lite Molephay	4
	Atomic 3000	4
	Mac 700 Profile	8
	Mac 700 Wash	8
	Mac 250 Wash	8
	MAC 350 Entour	4

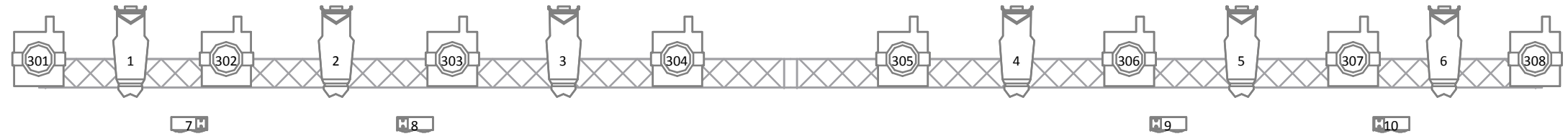
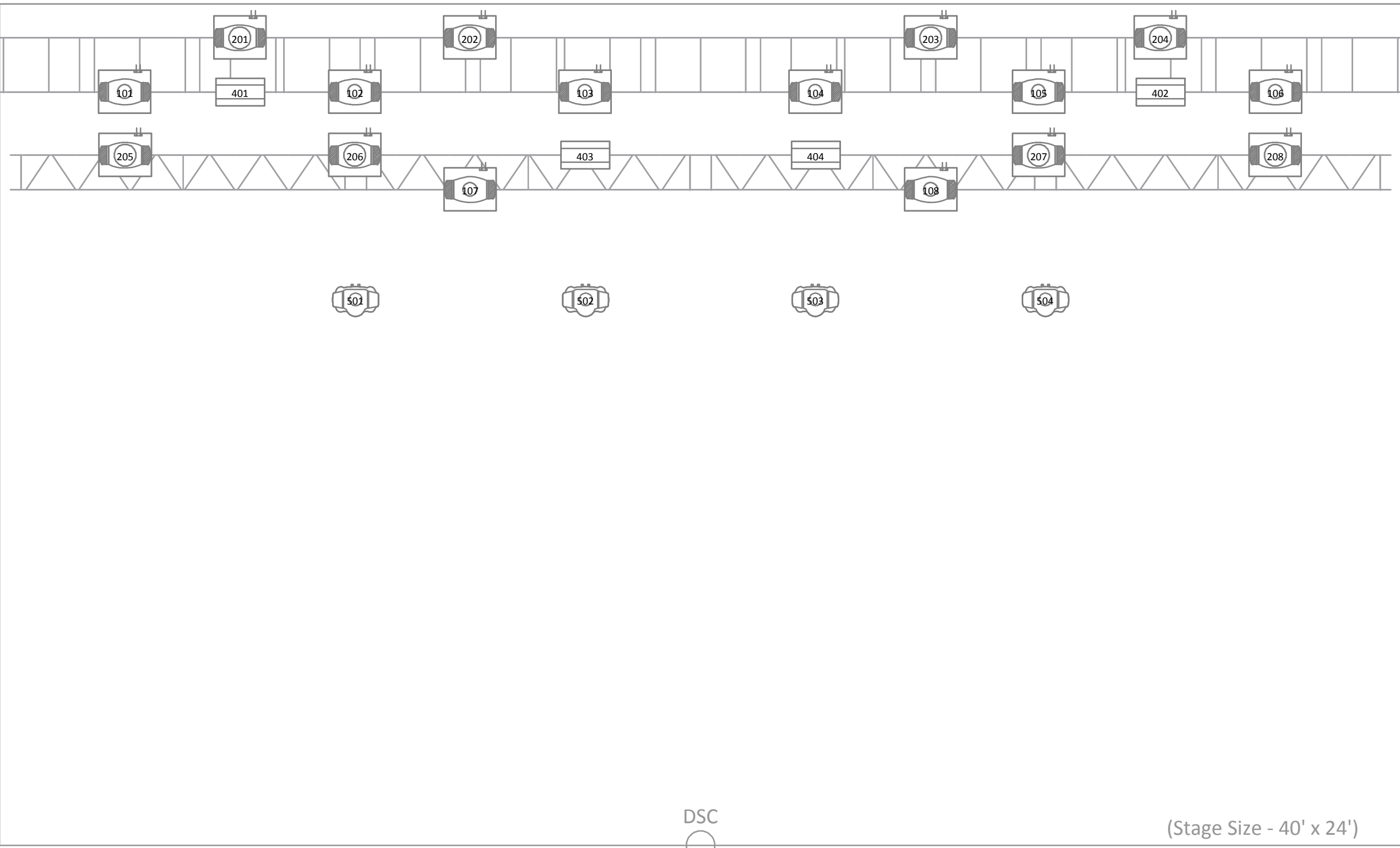
Notes:



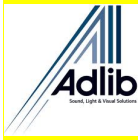
Manchester Academy 1 Lighting Plot

Client	Manchester Academy
Production	House System
Designer	
Drawn By	Ian Tomlinson
Draw Date	01/07/2014
Version	V1.1
Venue	Academy 1

All artwork, text, programming and ideas are copyright of Adlib Audio Ltd. All work to be carried out in respect of all relevant local health and safety legislation these designs are a representation only. The designer/draftsperson is not a licenced engineer and as such is not qualified to determine whether these designs and/or drawings meet relevant building code and/or structural safety requirements.



(Stage Size - 40' x 24')



FIXTURE PATCH SHEET

***** Patch by FIXTURE *****

Fixture	Mode	Fixt No.	DMX Chn	Address	Amps	Soca	Rack	Module	Type	Chan	Phase	Truss Name	Colour Code
Martin Mac 700 Profile	16BT	101	23	A 001	4.2	1.1	1	2	HOT	1	1	BACK	BLUE
Martin Mac 700 Profile	16BT	102	23	A 024	4.2	1.4	1	2	HOT	2	2	BACK	BLUE
Martin Mac 700 Profile	16BT	103	23	A 047	4.2	1.6	1	2	HOT	3	3	BACK	BLUE
Martin Mac 700 Profile	16BT	104	23	A 070	4.2	2.1	1	2	HOT	4	1	BACK	BLUE
Martin Mac 700 Profile	16BT	105	23	A 093	4.2	2.3	1	2	HOT	5	2	BACK	BLUE
Martin Mac 700 Profile	16BT	106	23	A 116	4.2	2.6	1	2	HOT	6	3	BACK	BLUE
Martin Mac 700 Profile	16BT	107	23	A 139	4.2	3.3	1	3	HOT	1	1	MID	ORANGE
Martin Mac 700 Profile	16BT	108	23	A 162	4.2	4.2	1	3	HOT	2	2	MID	ORANGE
Martin Mac 700 Wash	16BT	201	16	A 185	4.2	1.2	1	2	HOT	7	1	BACK	BLUE
Martin Mac 700 Wash	16BT	202	16	A 201	4.2	1.5	1	2	HOT	8	2	BACK	BLUE
Martin Mac 700 Wash	16BT	203	16	A 217	4.2	2.2	1	2	HOT	9	3	BACK	BLUE
Martin Mac 700 Wash	16BT	204	16	A 233	4.2	2.4	1	2	HOT	10	1	BACK	BLUE
Martin Mac 700 Wash	16BT	205	16	A 249	4.2	3.1	1	3	HOT	3	3	MID	ORANGE
Martin Mac 700 Wash	16BT	206	16	A 265	4.2	3.2	1	3	HOT	4	1	MID	ORANGE
Martin Mac 700 Wash	16BT	207	16	A 281	4.2	4.3	1	3	HOT	5	2	MID	ORANGE
Martin Mac 700 Wash	16BT	208	16	A 297	4.2	4.4	1	3	HOT	6	3	MID	ORANGE
Martin Mac 250 Wash	16 BT	301	13	A 313	1.4	5.2	1	3	HOT	9	3	FRONT	RED
Martin Mac 250 Wash	16 BT	302	13	A 326	1.4	5.5	1	3	HOT	10	1	FRONT	RED
Martin Mac 250 Wash	16 BT	303	13	A 339	1.4	6.2	1	3	HOT	11	2	FRONT	RED
Martin Mac 250 Wash	16 BT	304	13	A 352	1.4	6.3	1	3	HOT	12	3	FRONT	RED
Martin Mac 250 Wash	16 BT	305	13	A 365	1.4	6.4	1	4	HOT	1	1	FRONT	RED
Martin Mac 250 Wash	16 BT	306	13	A 378	1.4	6.5	1	4	HOT	2	2	FRONT	RED
Martin Mac 250 Wash	16 BT	307	13	A 391	1.4	7.1	1	4	HOT	3	3	FRONT	RED
Martin Mac 250 Wash	16 BT	308	13	A 404	1.4	7.4	1	4	HOT	4	1	FRONT	RED
Martin Atomic 3000 Strobe	4-Ch (HP)	401	4	A 417	16.0	1.3	1	2	HOT	11	2	BACK	BLUE
Martin Atomic 3000 Strobe	4-Ch (HP)	402	4	A 421	16.0	2.5	1	2	HOT	12	3	BACK	BLUE
Martin Atomic 3000 Strobe	4-Ch (HP)	403	4	A 425	16.0	3.4	1	3	HOT	7	1	MID	ORANGE
Martin Atomic 3000 Strobe	4-Ch (HP)	404	4	A 429	16.0	4.1	1	3	HOT	8	2	MID	ORANGE
Martin Mac 350 Entour	16 BT	501	17	A 433	2.0	8.1	1	4	HOT	5	2	FLOOR	GREEN
Martin Mac 350 Entour	16 BT	502	17	A 450	2.0	8.2	1	4	HOT	6	3	FLOOR	GREEN
Martin Mac 350 Entour	16 BT	503	17	A 467	2.0	8.3	1	4	HOT	7	1	FLOOR	GREEN
Martin Mac 350 Entour	16 BT	504	17	A 484	2.0	8.4	1	4	HOT	8	2	FLOOR	GREEN
ETC Source 4 Zoom (25-50)	750W	1	1	A 501	3.3	5.1	1	1	DIM	1	1	FRONT	RED
ETC Source 4 Zoom (25-50)	750W	2	1	A 502	3.3	5.4	1	1	DIM	2	2	FRONT	RED
ETC Source 4 Zoom (25-50)	750W	3	1	A 503	3.3	6.1	1	1	DIM	3	3	FRONT	RED
ETC Source 4 Zoom (25-50)	750W	4	1	A 504	3.3	6.6	1	1	DIM	4	1	FRONT	RED
ETC Source 4 Zoom (25-50)	750W	5	1	A 505	3.3	7.3	1	1	DIM	5	2	FRONT	RED
ETC Source 4 Zoom (25-50)	750W	6	1	A 506	3.3	7.6	1	1	DIM	6	3	FRONT	RED
4-Cell Mole Linear (4x1)	-	7	1	A 507	11.3	5.3	1	1	DIM	7	1	FRONT	RED
4-Cell Mole Linear (4x1)	-	8	1	A 508	11.3	5.6	1	1	DIM	8	2	FRONT	RED
4-Cell Mole Linear (4x1)	-	9	1	A 509	11.3	7.2	1	1	DIM	9	3	FRONT	RED
4-Cell Mole Linear (4x1)	-	10	1	A 510	11.3	7.5	1	1	DIM	10	1	FRONT	RED
Martin Magnum 2500 Hazer	1-Ch	99	1	A 511	4.3	8.5	1	4	HOT	12	3	FLOOR	GREEN